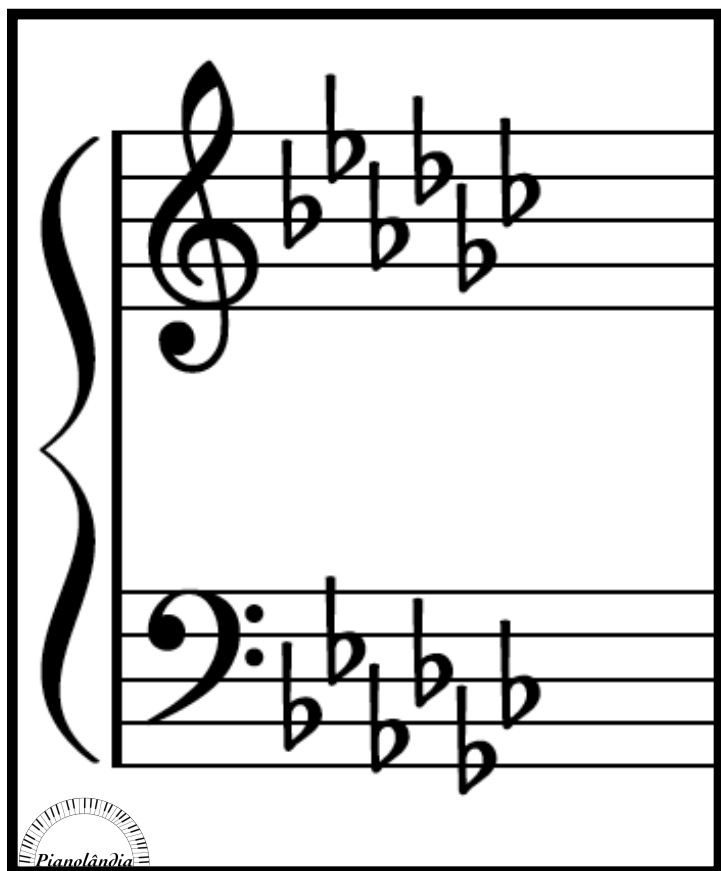
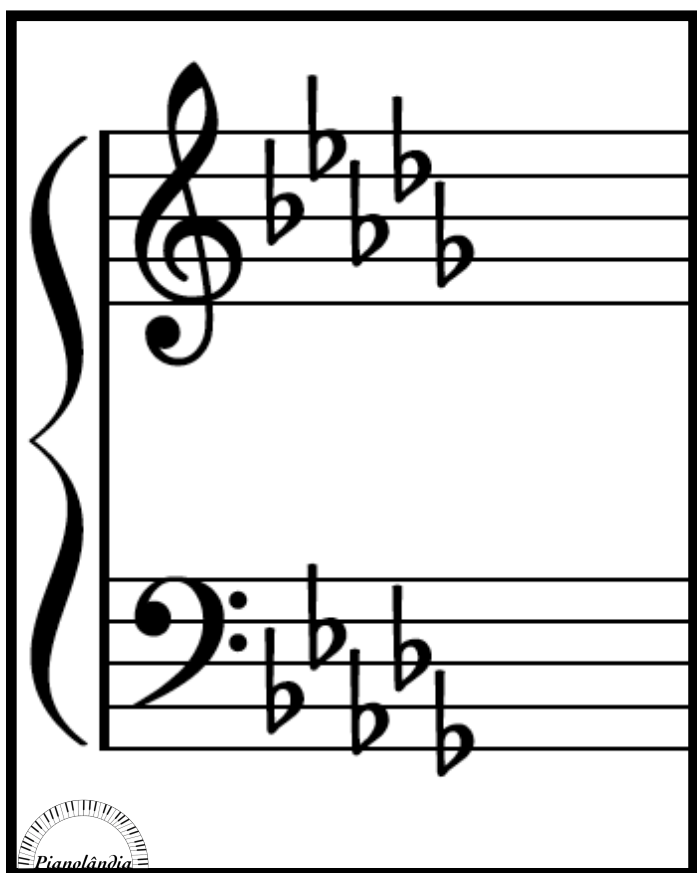


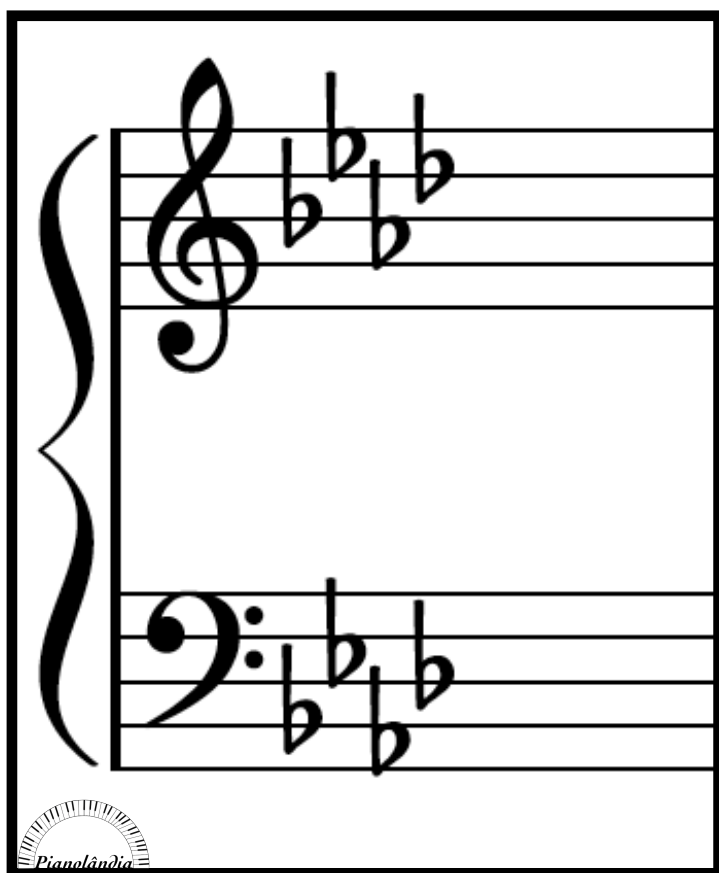
First musical exercise on a grand staff. The treble clef part contains a descending eighth-note scale: G4 (flat), F4 (flat), E4 (flat), D4 (flat), C4 (flat), B3 (flat), A3 (flat), G3 (flat). The bass clef part contains an ascending eighth-note scale: G2 (flat), A2 (flat), B2 (flat), C3 (flat), D3 (flat), E3 (flat), F3 (flat), G3 (flat). A large brace on the left groups both staves. A small logo with the text "Pianolândia" is in the bottom left corner.



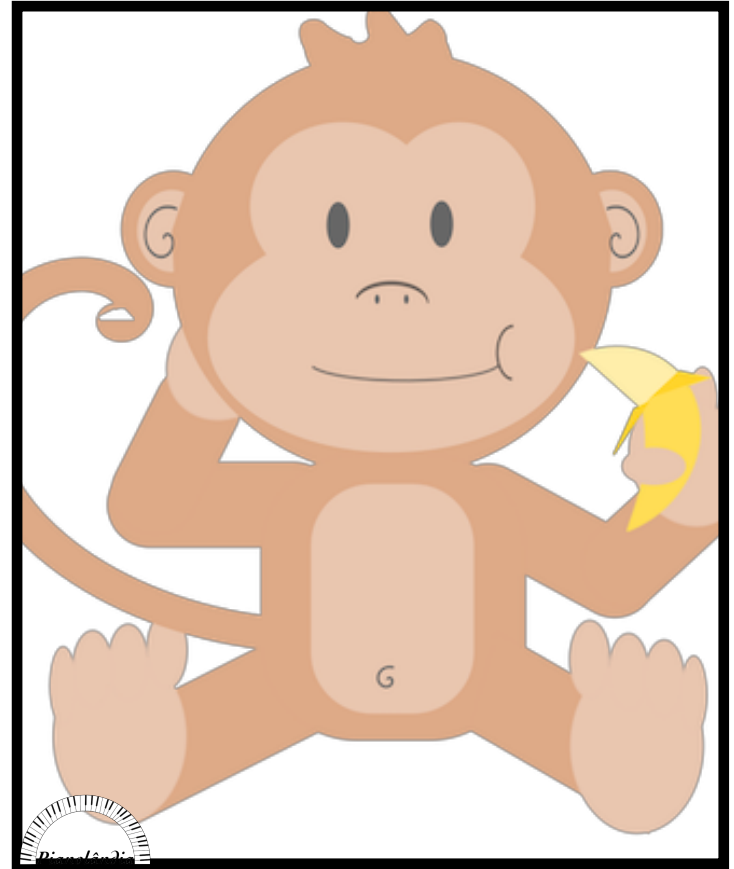
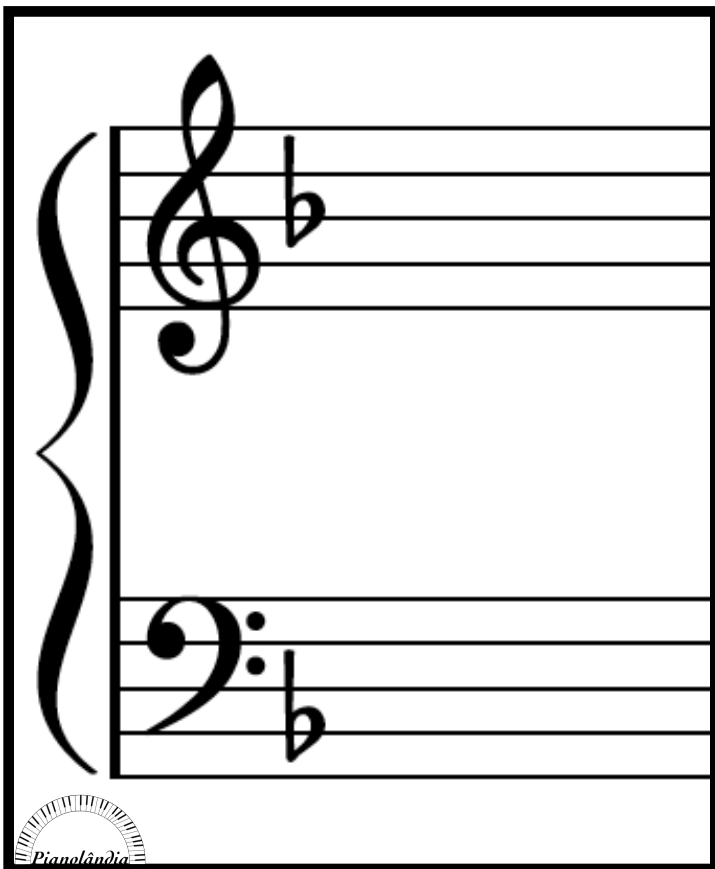
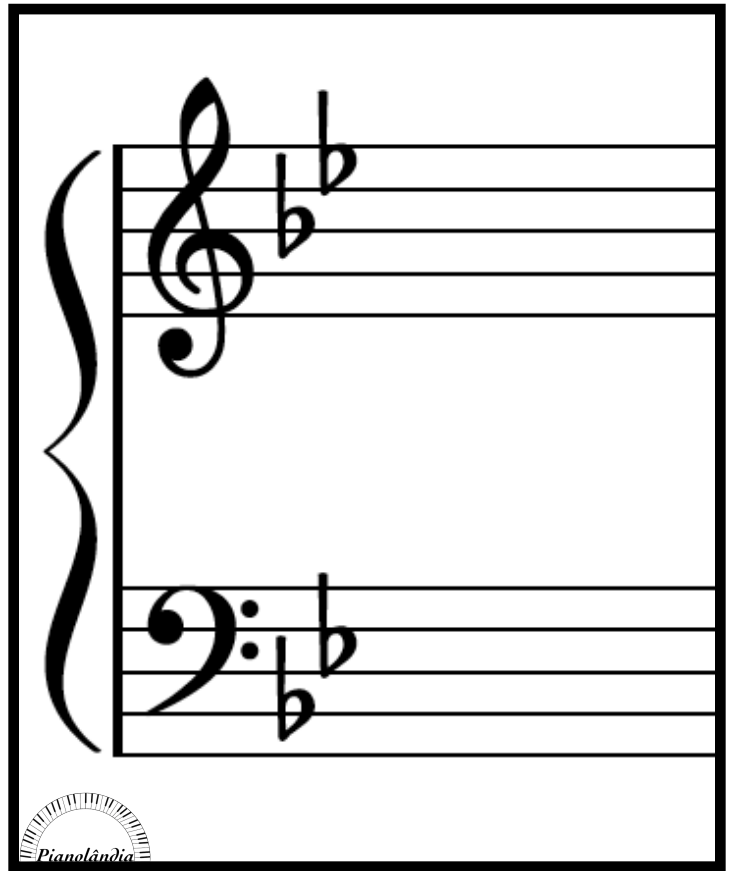
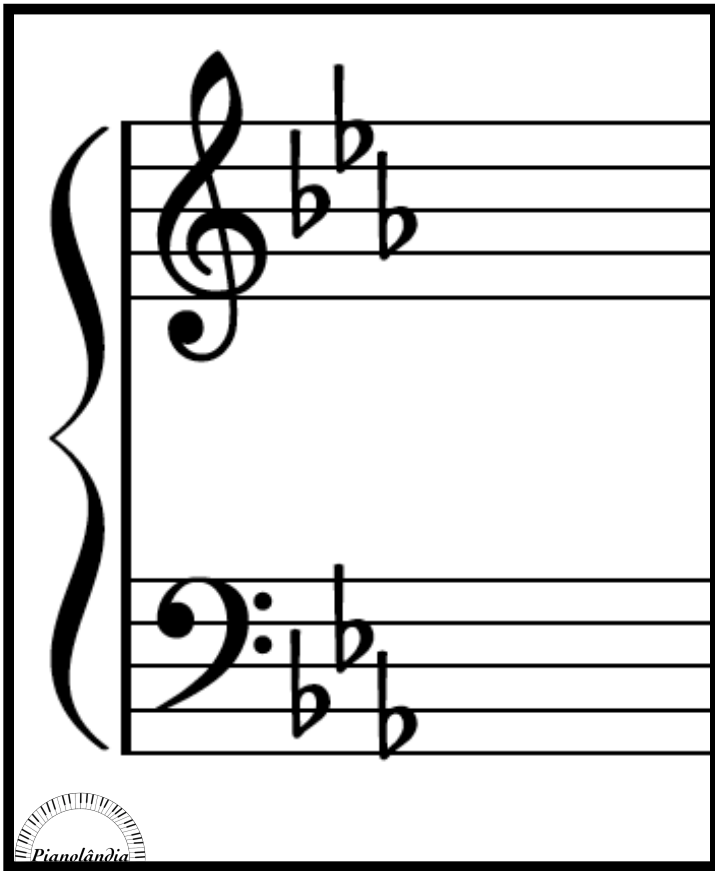
Second musical exercise on a grand staff. The treble clef part contains a descending eighth-note scale: G4 (flat), F4 (flat), E4 (flat), D4 (flat), C4 (flat), B3 (flat), A3 (flat), G3 (flat). The bass clef part contains an ascending eighth-note scale: G2 (flat), A2 (flat), B2 (flat), C3 (flat), D3 (flat), E3 (flat), F3 (flat), G3 (flat). A large brace on the left groups both staves. A small logo with the text "Pianolândia" is in the bottom left corner.



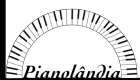
Third musical exercise on a grand staff. The treble clef part contains a descending eighth-note scale: G4 (flat), F4 (flat), E4 (flat), D4 (flat), C4 (flat), B3 (flat), A3 (flat), G3 (flat). The bass clef part contains an ascending eighth-note scale: G2 (flat), A2 (flat), B2 (flat), C3 (flat), D3 (flat), E3 (flat), F3 (flat), G3 (flat). A large brace on the left groups both staves. A small logo with the text "Pianolândia" is in the bottom left corner.



Fourth musical exercise on a grand staff. The treble clef part contains a descending eighth-note scale: G4 (flat), F4 (flat), E4 (flat), D4 (flat), C4 (flat), B3 (flat), A3 (flat), G3 (flat). The bass clef part contains an ascending eighth-note scale: G2 (flat), A2 (flat), B2 (flat), C3 (flat), D3 (flat), E3 (flat), F3 (flat), G3 (flat). A large brace on the left groups both staves. A small logo with the text "Pianolândia" is in the bottom left corner.



DÓ MAIOR



SOL MAIOR



RÉ MAIOR



LÁ MAIOR



MI MAIOR



SI MAIOR



FÁ # MAIOR



DÓ # MAIOR



DÓ \flat MAIOR



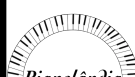
**SOL \flat
MAIOR**



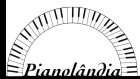
RÉ \flat MAIOR



LÁ \flat MAIOR



MI \flat MAIOR



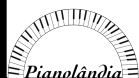
SI \flat MAIOR



FÁ MAIOR



LÁ MENOR



MI MENOR



SI MENOR



**FÁ#
MENOR**



**DÓ#
MENOR**



SOL #
MENOR



RÉ #
MENOR



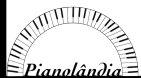
LA #
MENOR



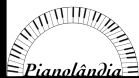
LÁ b MENOR



MI \flat MENOR



SI \flat MENOR



FÁ MENOR



DÓ MENOR



SOL MENOR



RÉ MENOR

